

ELECTRONIC CHECKWRITER

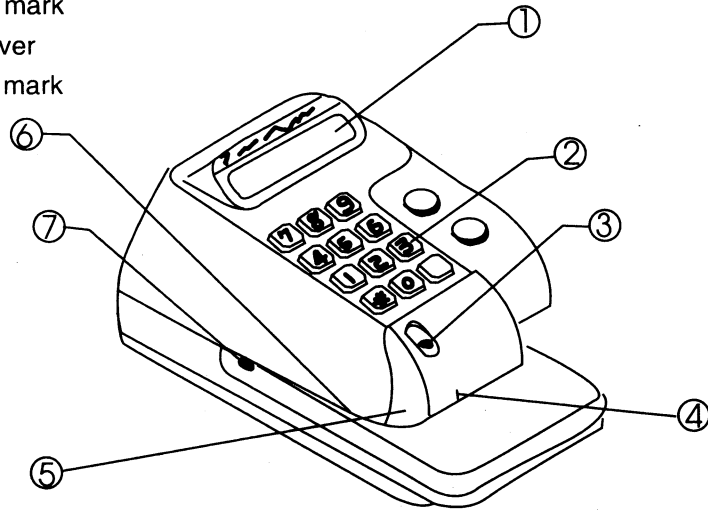
OPERATION MANUAL



OPERATION MANUAL

1.Names of parts

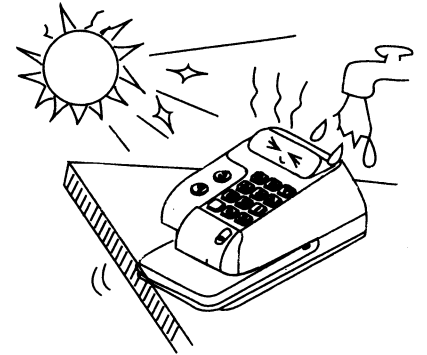
- 1.Display
- 2.Operation key
- 3.Paper holding lever
- 4.Starting position mark
- 5.Letter Wheel Cover
- 6.Printing position mark
- 7.Paper stopper



Names	Explanation
1.Display	To display the Input amount.
2.Operation key	To input the amount to be printed on a check paper.
3.Paper holding lever	To hold a paper.
4.Starting position mark	Starting position where currency mark is the first to be printed. *
5.Letter Wheel Cover	Remove cover when replacing ink pad.
6.Printing position mark	Guide for printing position.
7.Paper stopper	Adjust the top of printing paper.

2.Caution

- (1) Do not unplug the power cord or turn off the power switch when printing.
- (2) Do not print if the paper is not set as it will damage the Letter wheel.
- (3) Do not expose the machine to high temperature, direct sunlight or shock.
- (4) The machine should be used in a suitable flat-surface location.

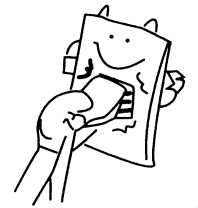


3.Operation

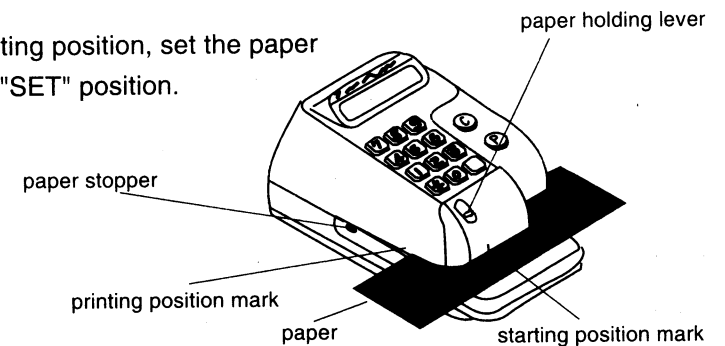
Turn the power switch to "ON".

- (1) Connect the electric Cable Plug to the wall socket firmly.
- (2) Turn the power switch "ON".
- (Caution)

Do not repeatedly turn the switch ON/OFF.



- (3) Set the paper to the printing position
- (4) Turn the Paper holding lever to the OFF position.
- (5) Then adjust the printing position guided by the paper stopper & position marks.
- (6) After setting the printing position, set the paper holding lever to the "SET" position.



To issue

1. Set the paper and make sure the printing position.
2. Press the operation key to input the amount.
3. Check the amount on the display and press issuing key to print.
4. Turn the paper holding lever (OFF) and take out the paper after printing.

1 2 3 4 5 6 7 8 . 9 0

12,345,678.90



Printing sample

\$12. 345. 678. 90 ※
\$12. 345. 678. 90 ¢

◎ [\$] [.] ¢ [※]

currency mark, comma and end mark are automatically printed.

- ◎ In case of issuing the same amount, set a new paper and press (ISSUING KEY) as above.

(Caution)

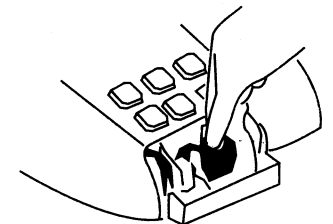
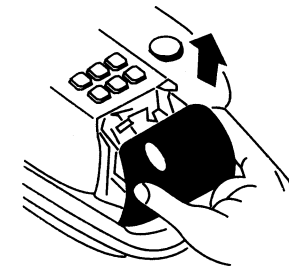
When the paper is issued, set the Paper holding lever to "SET"

4.Replacement of the Ink Pad.

In case the printing becomes light colored, the ink pad should be changed.

- (1) Turn off the switch and turn paper holding lever off.

- (2) Remove the wheel cover.
- (3) Remove the old ink pad and replace it with a new pad.



- (4) Reset the Wheel cover.



(Caution)

Do not apply any ink to the ink pad other than the Original F X series.

5. Trouble shooting

Please check again if the following conditions occur.

- 5-1. The switch is "ON" but nothing happens. → Make sure the plug is connected firmly.
- 5-2. Paper is not carried when pressing the "ISSUE" key. → Check whether the paper holding lever is "SET".
- 5-3. The machine is locked and does not work while printing. → Release the lock.

How to release the lock.

After 10 seconds from power "OFF", turn it to "ON" again.
(Repeat this operation 2 or 3 times) This may release the machine.

SPECIFICATIONS

Imprint mode	:perforated imprints by the revolving wheel.
Max number of figures to print	:10 figures
Printing Speed	:Approx 8.5 seconds to print the full amount.
Display	:LCD display
Temperature/Humidity	:Temperature 0°C-40 °F Humidity 80 %
Electric power	:AC220V/50Hz/60Hz
Power Consumption	:3.5w (Max 22W)
Dimensions	:W110 × D245 × H130.5mm
Weight	:1.8Kg

Operation key points

The function of this machine is distinguished by different codes. After the power is turned on, you have to key in correct codes depended on its function.

(The initial function of this machine is set at the same as local currency. You don't have to press the code "00")

CODE: 1.

E.G. : (1)00-NT\$ 01-US\$ 02-¥ 03-year.month.date 04-NO.
 00-US\$ 01-CAN\$ 02-RLS 03-year.month.date 04-NO.
 00-HK\$ 01-US\$ 02-¥ 03-year.month.date 04-NO.
 00-S\$ 01-US\$ 02-RM 03-year.month.date 04-NO.
 00-CAN\$ 01-US\$ 02-¥ 03-year.month.date 04-NO.
 (2)00-¥ 01-US\$ 02-¥ 03-year.month.date 04-NO.
 00-¥ 01-US\$ 02-¥ 03-year.month.date 04-NO.
 00-¥ 01-US\$ 02-¥ 03-year.month.date 04-NO.
 00-RM 01-S\$ 02-RP 03-year.month.date 04-NO.
 00-¥ 01-US\$ 02-¥ 03-year.month.date 04-NO.
 00-RP 01-S\$ 02-RM 03-year.month.date 04-NO.

E.G. : (1)NT\$1234.12→input1234.12→P (print)
 (2)¥1234.12→input1234.12→P (print)

- To modify numbers, please press key "C" (back and erase key). you can press one time to erase one number, or hold it for clearing the whole column of numbers.
- If the amount is an integer and the decimal (.00) isn't input, it will be an integer while printing and the decimal (.00) will not be printed.
- If it is working at the same currency, you can directly input the amount for second check after the first one was printed and doesn't need to press key "C".
- when using function "03", you have to key in 8 numbers for printing. For example: Aug. 07, 1994, you have to input "19940807".
- When using function "04", e.g. if you want to print No. 76892, you have to key in 0476892, If you want to change number, please press key "C" for clearing the old number and then input the new number for printing.
- If you want to use 00-02 for function exchanging, you just need to input function-code directly. For using function 03 and 04 to be exchanged to other functions, please follow next operation method.
- If you want to use function "03" and "04" to be exchanged to other functions, please press key "C" for clearing the whole column of numbers; and then press key "C" again to let LCD display 0, and then input required code. Then the Procedure is ok.

Multi-function electronic check-printer operation guide

KEY description :

- ※: To cancel a check
- ERASE : ※: When calculating addition, subtraction, multiplication or division, this key works as (%) percentage.
- TOTAL AMOUNT : : This key will show the total amount of all the printed checks, while displaying total amount, it cannot work further; please reset this key and then next amount can be input until the last printed amount was shown.
- TOTAL SHEETS : : This key will show the total sheets of all the printed checks. while displaying total sheets, it cannot work further; please reset this key and then next amount can be input until the last printed amount was shown.
- CE KEY : A. To erase the last number when calculating addition, subtraction, multiplication or division.
B. Erase key for LCD display
- C KEY : A. While displaying the total amount or total sheets, this key is pressed to erase its memory of total amount or total sheets and to re-start a new memory.
- P KEY : : To print amount
- ~ , , , : Number-input key

CHECK-LOCATING :

1. First please set the left sign " | " at dotted line of check's capital column; then the location for horizontal column is ready.
2. To set the start printing position:
Please locate the first character of capital column at "\$" line of check-printer plate.
3. when locating ready, please input amount and press 'release key'.
Then check-printer will set check properly and start printing automatically.

INK-Supply

- Please add oil-type ink. You can buy it at a stationery store.
- If You want to add ink, please open the cap of printer head and pull up the ink wheel to add ink.